



Tropical Storm Nicole Commentary
Wednesday, November 9, 2022

Hurricane Commentary

Tropical Storm Nicole – Wednesday, November 9th, 2022

Tropical Storm Metrics

Date/Time

Wednesday, November 9, 2022; 10:00 AM EST

Location

26.5N 76.7W, 25 miles ENE of Great Abaco Island
210 miles E of West Palm Beach, Florida

Wind / Pressure

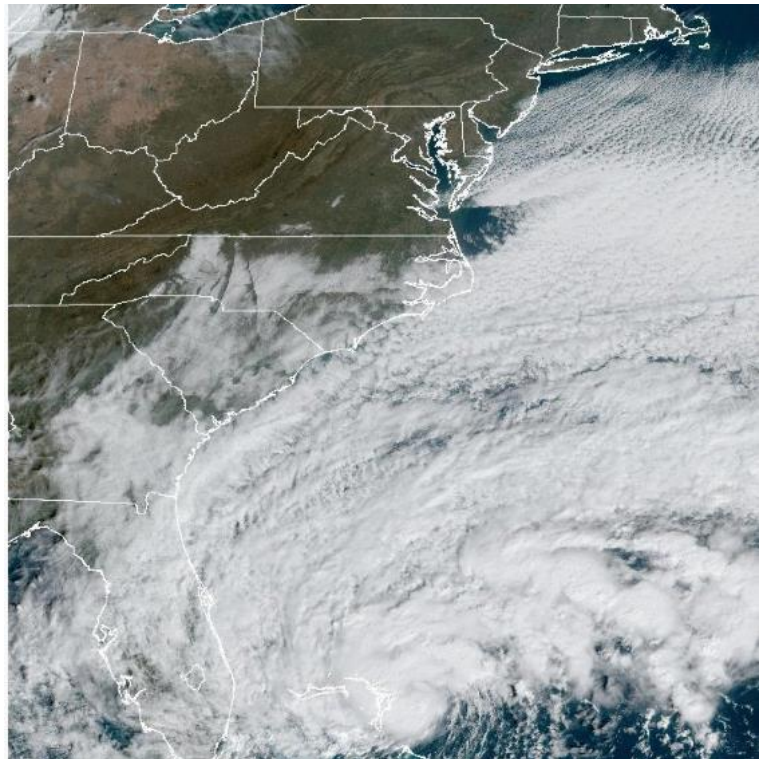
70 mph / 986 mb

Speed / Direction

12 mph / W or 265 degrees

Executive Summary

Nicole is approaching the northern Bahamas this morning as a strong tropical storm, just below hurricane strength. Nicole is expected to strengthen slightly over the next 24 hours and will likely be a Category 1 hurricane right before landfall. Landfall is expected late tonight or early tomorrow morning just north of the West Palm Beach area. Whether Nicole maintains its strength or becomes a hurricane, there will still be impacts far from the center, as tropical-storm-force winds extend outward 460 miles to the north. After making landfall overnight along the east coast of Florida, Nicole will move across the peninsula and begin turning to the north and northeast on Thursday. Once over land, Nicole will weaken into a depression and eventually transition to an extra-tropical cyclone, bringing the potential for heavy rain and possible flooding to the interior mid-Atlantic and Northeast.



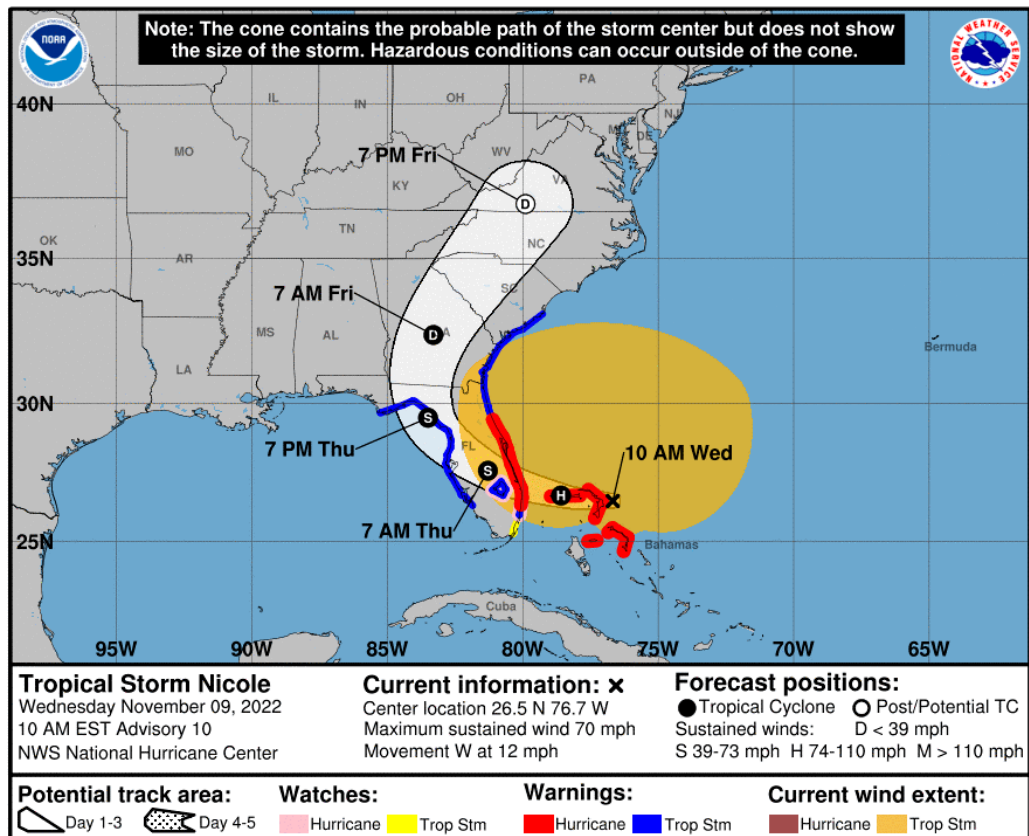
Satellite image of Tropical Storm Nicole – Image Courtesy of NOAA

Report Details

Nicole is moving toward the west near 12 miles (19 km/h). A turn toward the west-northwest is expected tonight, followed by a turn toward the northwest on Thursday, and north or north-northeast on Friday. On the forecast track, the center of Nicole will move near or over the Abacos and Grand Bahama in the northwestern Bahamas today and move onshore the east coast of Florida within the hurricane warning area tonight. Nicole's center is then expected to move across central and northern Florida into southern Georgia Thursday and Thursday night, and then across the Carolinas Friday and Friday night.

Maximum sustained winds are near 70 miles per hour (110 km/h) with higher gusts. Some strengthening is expected today, and Nicole is forecast to become a hurricane near the northwestern Bahamas and remain a hurricane when it reaches the east coast of Florida tonight. Nicole is expected to weaken while moving across Florida and the southeastern United States Thursday through Friday, and it is likely to become a post-tropical cyclone by Friday night over the Mid-Atlantic states.

Nicole is a large tropical storm. Tropical storm force winds extend outward up to 460 miles (740 km) especially to the north of the center.



3 Day Storm Forecast Track – Image Courtesy of NOAA

Watches & Warnings

A Hurricane Warning is in effect for

- The Abacos, Berry Islands, and Grand Bahama Island
- Boca Raton to Flagler/Volusia County Line Florida

A Tropical Storm Warning is in effect for

- Bimini in the northwestern Bahamas
- Hallandale Beach Florida to Boca Raton Florida
- Flagler/Volusia County Line Florida to South Santee River South Carolina
- North of Bonita Beach to Indian Pass Florida
- Lake Okeechobee

A Storm Surge Warning is in effect for

- North Palm Beach Florida to Altamaha Sound Georgia
- Mouth of the St. Johns River to Georgetown Florida
- Anclote River Florida to Ochlockonee River Florida

A Hurricane Watch is in effect for

- Hallandale Beach to Boca Raton Florida
- Lake Okeechobee

A Storm Surge Watch is in effect for

- South of North Palm Beach to Hallandale Beach Florida
- Altamaha Sound Georgia to South Santee River South Carolina
- Ochlockonee River to Indian Pass Florida

A Tropical Storm Watch is in effect for

- South of Hallandale Beach to north of Ocean Reef Florida

Hazards Affecting Land

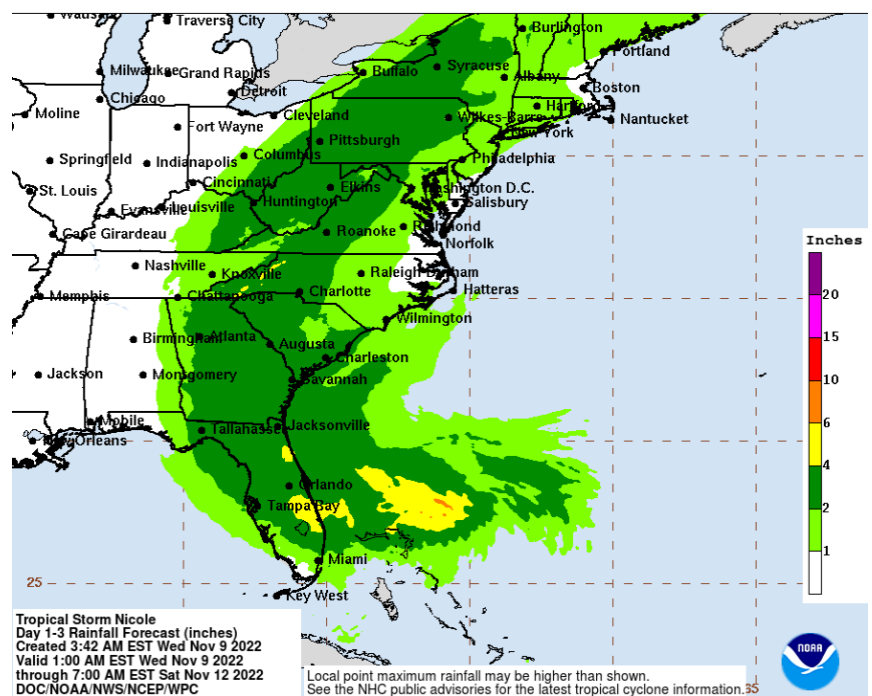
1) Wind

Tropical storm conditions are occurring across the northwestern Bahamas, and hurricane conditions are expected to spread westward in areas in hurricane warning area through this evening. Tropical storm conditions are also occurring along portions of the east coast of Florida and will spread northward within the warning area through Georgia and South Carolina today and tonight. Hurricane conditions are expected within the hurricane warning area in Florida tonight or Thursday morning. Hurricane conditions are possible within the hurricane watch area tonight. Tropical storm conditions are expected within the warning area along the west coast of Florida by this evening or tonight.

2) Rainfall

Nicole is expected to produce the following rainfall amounts through Friday night:

- Northwest Bahamas into the eastern, central and northern portions of the Florida Peninsula: 3 to 5 inches with local maxima of 8 inches
- Southeast into the southern and central Appalachians, western Mid-Atlantic, and eastern portions of Tennessee, Kentucky, and Ohio: 2 to 4 inches with local maxima of 6 inches along the Blue Ridge.

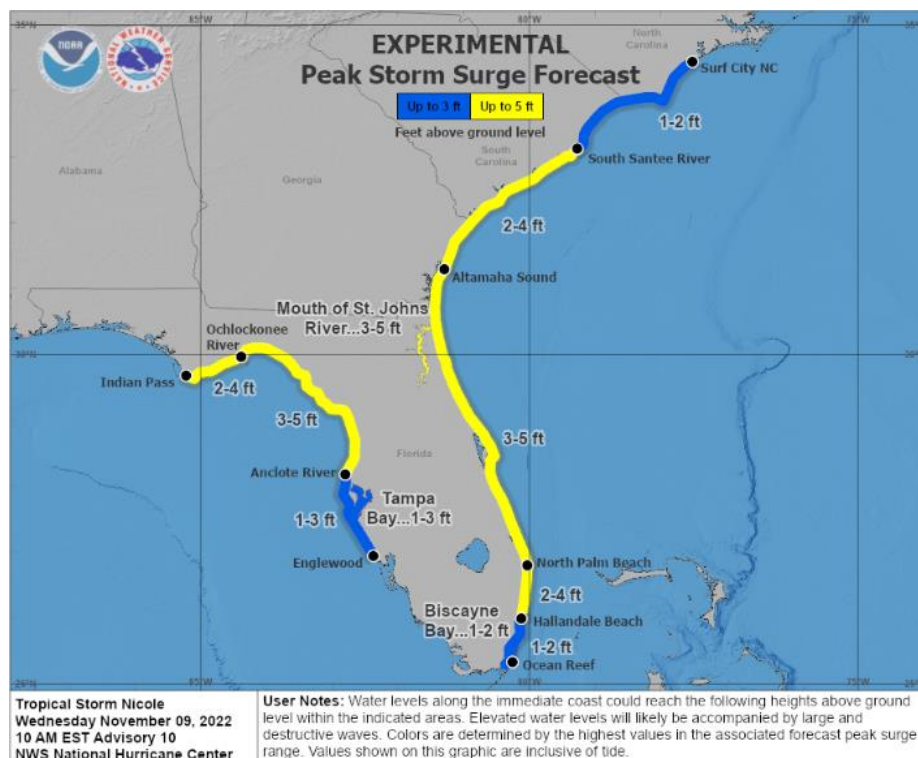


Day 1-3 Rainfall Forecast – Image Courtesy of NOAA

3) Storm Surge

The combination of a dangerous storm surge and the tide will cause normally dry areas near the coast to be flooded by rising waters moving inland from the shoreline. The water could reach the following heights above ground somewhere in the indicated areas if the peak surge occurs at the time of high tide

- North Palm Beach to Altamaha Sound including the St. Johns River to the Fuller Warren Bridge...3 to 5 ft
- Altamaha Sound to the South Santee River...2 to 4 ft
- St. Johns River south of the Fuller Warren Bridge to Georgetown...2 to 4 ft
- Hallandale Beach to North Palm Beach...2 to 4 ft
- Anclote River to the Ochlockonee River...3 to 5 ft
- Ochlockonee River to Indian Pass...2 to 4 ft
- Englewood to Anclote River including Tampa Bay...1 to 3 ft
- North of Ocean Reef to Hallandale Beach including Biscayne Bay...1 to 2 ft
- South Santee River to Surf City North Carolina...1 to 2 ft

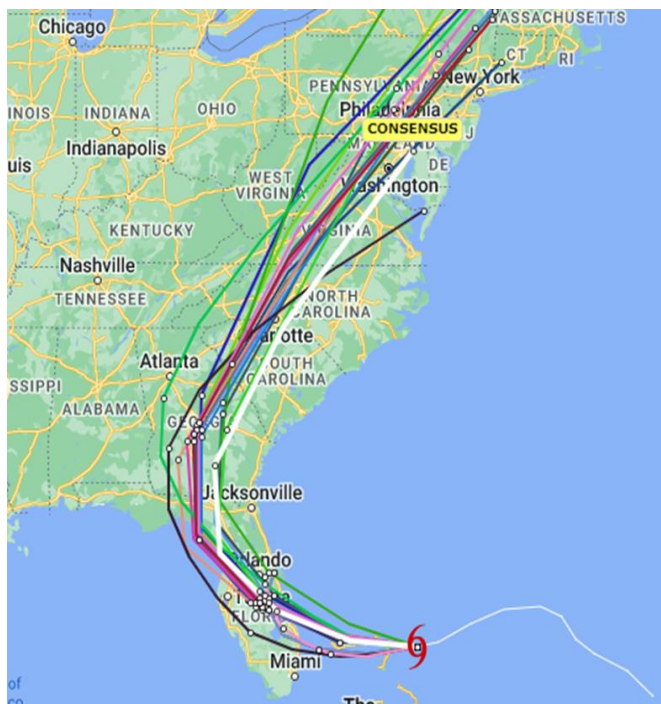


Peak Storm Surge Forecast – Image Courtesy of NOAA

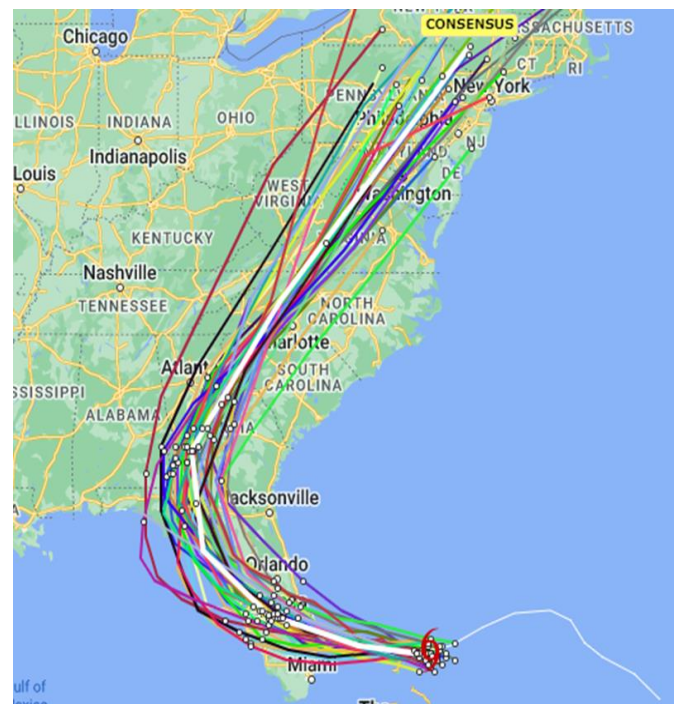
Model Track Forecasts

Nicole is now moving westward, and this motion should bring the center across the Abacos and Grand Bahama in the northwestern Bahamas during the next several hours. Subsequently, a westward to west-northwestward motion should bring the center to the southeast or east-central coast of Florida tonight. After landfall in Florida, a low- to mid-level ridge (high pressure) over the southeastern U.S. is expected to slide eastward over the Atlantic, with Nicole turning northwestward and northward across northern Florida or the northeastern Gulf of Mexico, and then across the southeastern U.S. Finally, a deep layer mid-latitude trough (low pressure) approaching from the west should cause Nicole to accelerate northeastward toward the Mid-Atlantic states.

Guidance between the early model tracks (models available almost immediately and can be used by the forecaster in the current cycle) and the late model tracks (models that are more complex and generally take several hours to run) agree on the general track over the next few days.



Early Model Tracks – Image Courtesy of Tropical Atlantic



Late Model Tracks – Image Courtesy of Tropical Atlantic

Data is reported by Tropical Atlantic, Tropical Tidbits, Weathernerds, The Weather Prediction Center, and the National Hurricane Center, a division of the National Oceanic and Atmospheric Administration

Key Contacts



Simon Hedley
CEO, Acrisure Re
Location: New York
+1 212 792 8905
SHedley@AcrisureRe.com



Michael Cross
President, Acrisure Re NA
Location: Burlington
+1 336 603 1469
MCross@AcrisureRe.com



Warren Berkstresser
EVP & Head of Seattle Office
Location: Seattle
+1 206 673 0159
WBerkstresser@AcrisureRe.com



Craig Darling
EVP & Head of Florida Office
Location: Florida
+1 321 372 8762
CDarling@AcrisureRe.com



Michael Fitzgerald
SVP, Head of Burlington Office
Location: Burlington
+1 336 512 9080
MFitzgerald@AcrisureRe.com



Clark Hontz
President of Bermuda Office
Location: Bermuda
+1 441 296 2772
CHontz@AcrisureRe.com



Ming Li
Managing Director & Global Head of Catastrophe Modeling
Location: New York
+1 917 435 0477
MLi@AcrisureRe.com



Marc Piccione
Partner
Location: New York
+1 646 665 7561
MPiccione@AcrisureRe.com



David Sowrey
Partner
Location: London
+44 (0) 20 7680 8394
DSowrey@AcrisureRe.com



Paul Sperrazza
SVP, Head of Minneapolis Office
Location: Minneapolis
PSperrazza@AcrisureRe.com



Rick Thomas
Managing Director
Location: Zurich
+41 78 669 17 40
RThomas@AcrisureRe.com



Jeff Turner
Partner, MD of Toronto
Location: Toronto
+1 416 847 5440
JTurner@AcrisureRe.com

Confidentiality Notice

This document, including any attachments, is solely for the use of the intended addressee and may contain privileged and/or confidential information. If you are not the intended recipient, you must not make any use of this documents or its attachments. Please immediately notify the sender and destroy all copies of this document and its attachments using industry accepted data destruction methods.

If you retain this document and its attachments, by doing so, you fully consent:

1. to use this information only for the purposes for which it was provided, ensuring that such information remains privileged, is kept confidential and protected from unauthorized use, disclosure, alteration, destruction or distribution;
2. to abide by all laws and regulations applicable to our Client and the Acrisure Group of companies which govern the treatment of data including that of natural persons; and
3. to only distribute such information to parties when necessary for the fulfilment of the business purpose and who have consented to these or materially alike provisions contained in this article;

You further consent to follow the reasonable instructions of our Client and/or the Acrisure Group of companies, or their agents, made time to time to ensure that such data, whether held by you, or the parties to which you have distributed it to, is maintained in accordance with this article, including but not limited to consenting to data security audits.

In order for our Clients or Acrisure to meet their obligations you further consent to immediately notifying Acrisure in writing in the event of a breach of this article or when you have been contacted by a natural person concerning their personal data.

Irreparable harm may arise to the parties supplying this information, including data subjects, for which financial remedies may be inadequate and therefore the forenamed parties retain the right to seek injunctive relief (or similar process), including under laws to which the aforementioned parties are subject to, when necessary to ensure that the information provided is afforded the expected duty of care or remedy in the event of unauthorized use of data.

Disclaimer

Acrisure Re and its affiliates ("we", "us" or "our") provide the information contained within this document on an as is basis solely for the use of the intended recipient and for informational purposes only. We make no representation, guarantee, or warranty, whether express or implied, including any as to the accuracy, completeness, timeliness, satisfactory quality or fitness for any particular purpose or use of any information contained herein.

We may have relied on data provided by an insurer, reinsurer, managing general agent, public data and other sources when preparing this information. Such information, and our related calculations, projections, forecasts and estimates, are derived from or based on sources believed by us to be reliable, but we do not guarantee the correctness or accuracy of such information, calculations, projections, forecasts or estimates. All forward-looking statements in this document are subject to various risks and uncertainties that could cause results to differ materially from expectations. Users should not place reliance on such forward-looking statements or any other information contained herein.

We shall not be liable, under any circumstances, to any user or other person for any direct, special, indirect, incidental, consequential, punitive or damages of any other kind, or for lost profits or lost opportunities associated with this information including but not limited to the underlying data, the actuarial methods used in the analysis of the data and the resulting information. We do not accept any liability associated with the use of this information and no duty of liability is owed to any party unless agreed otherwise in writing by us.

This document and the information contained herein constitute our property, which may include trade secrets, and such document and information shall not be distributed by the recipient to any other party without our prior written approval. Our rights in respect of this are reserved, including seeking damages for unauthorized use of the document and/or the information contained therein and/or seeking injunctive or other similar relief.

Acceptance of this document is deemed agreement to the terms set forth in this Important Notice.