



## **Tropical Storm Ian Commentary**

*Thursday, September 29, 2022*

## Hurricane Commentary

### Tropical Storm Ian – Thursday, September 29<sup>th</sup>, 2022

#### Hurricane Metrics

*Date/Time*

Thursday, September 29, 2022; 11:00 AM EST

*Location*

28.7N 80.4W, 25 miles NNE of Cape Canaveral, Florida  
285 miles S of Charleston, South Carolina

*Wind / Pressure*

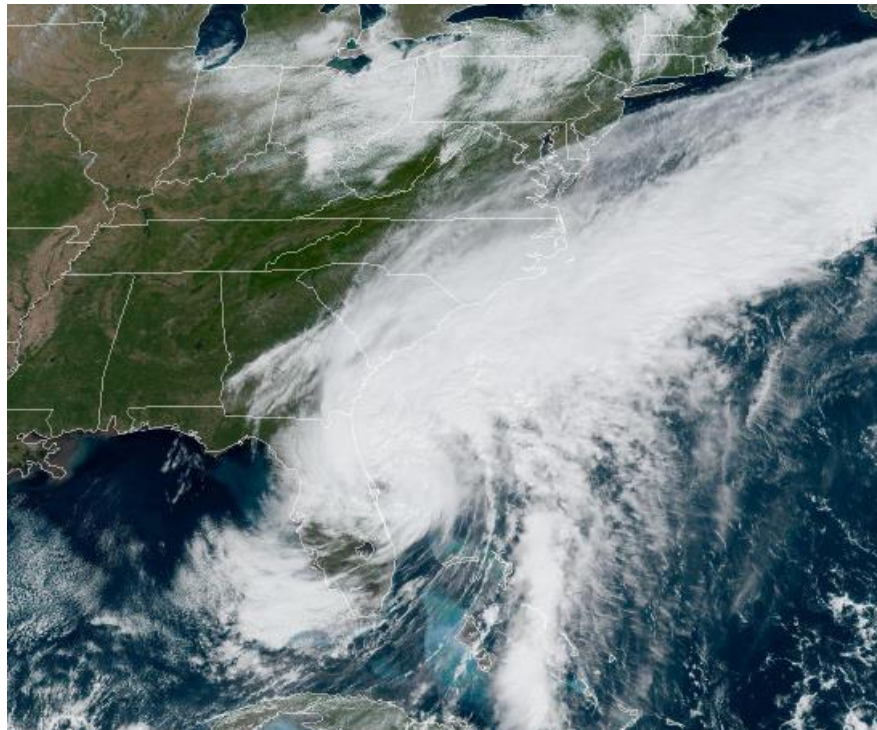
70 mph / 987 mb

*Speed / Direction*

9 mph / NNE or 30 degrees

#### Executive Summary

The center of Ian has emerged into the western Atlantic Ocean to the north of Cape Canaveral leaving behind devastating impacts across a large portion of Florida. Tropical Storm Ian is now forecast to make an additional landfall in South Carolina as a category 1 hurricane. Due to the atypical structure and incredible size (415 mile wide tropical storm force wind field), strong winds will extend well ahead of the center, even on the northwestern side. Hurricane-force winds are expected across the South Carolina coast beginning early Friday.



*Satellite image of Tropical Storm Ian – Image Courtesy of NOAA*

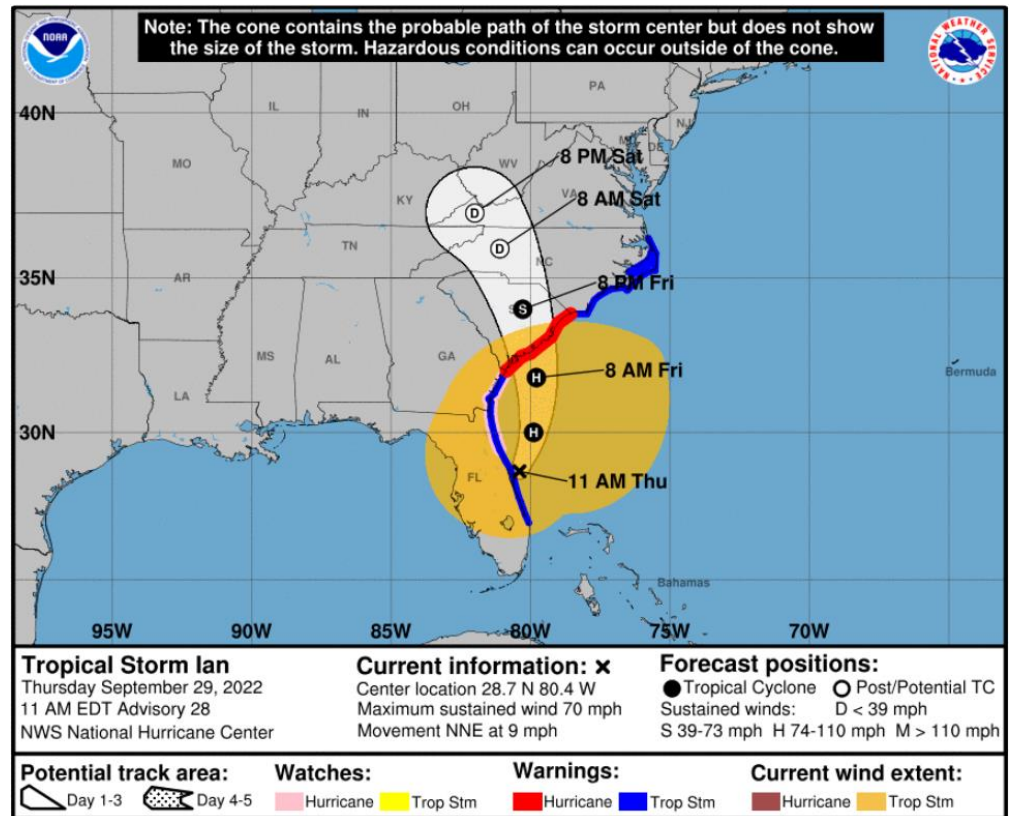


Report Details

Ian is moving toward the north-northeast near 9 mph (15 km/h). A turn toward the north is expected late today, followed by a turn toward the north-northwest with an increase in forward speed Friday night. On the forecast track, Ian will approach the coast of South Carolina on Friday. The center will move farther inland across the Carolinas Friday night and Saturday.

Maximum sustained winds have increased to near 70 mph (110 km/h) with higher gusts. Ian is expected to become a hurricane again this evening and make landfall as a hurricane on Friday, with rapid weakening forecast after landfall.

Tropical-storm-force winds extend outward up to 415 miles (665 km) from the center. A NOAA CMAN station at the Saint Johns County pier in Saint Augustine Beach recently reported a sustained wind of 53 mph (85 km/h) and a gust of 61 mph (98 km/h). A WeatherSTEM station reported a gust of 74 mph (119 km/h) was reported at Marineland, Florida.



5 Day Storm Forecast Track – Image Courtesy of NOAA

## Watches & Warnings

A Storm Surge Warning is in effect for:

- Flagler/Volusia Line to Little River Inlet
- Neuse River
- St. Johns River

A Hurricane Warning is in effect for:

- Savannah River to Little River Inlet

A Tropical Storm Warning is in effect for:

- Jupiter Inlet Florida to Duck North Carolina
- Pamlico Sound

A Storm Surge Watch is in effect for:

- North of South Santee River to Duck North Carolina
- Pamlico River

A Hurricane Watch is in effect for:

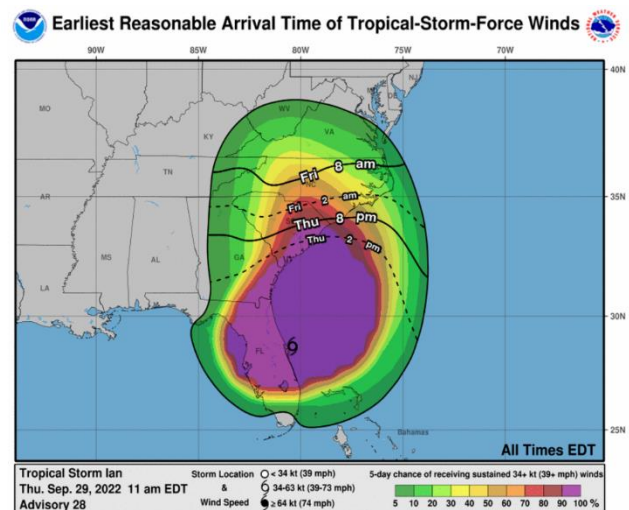
- Flagler/Volusia County Line to the Savannah River

## Hazards Affecting Land

### 1) Wind

Hurricane conditions are expected to begin over the Hurricane Warning area starting early Friday, with tropical storm conditions beginning overnight.

Tropical storm conditions are now occurring in parts of the warning area on the east coasts of Florida and should spread northward along the Georgia and North Carolina coasts today through Friday. Hurricane conditions are possible within the Hurricane Watch area in northeastern Florida and Georgia today into Friday



Most Likely Arrival Time of Tropical-Storm-Force Winds – Image Courtesy of NOAA

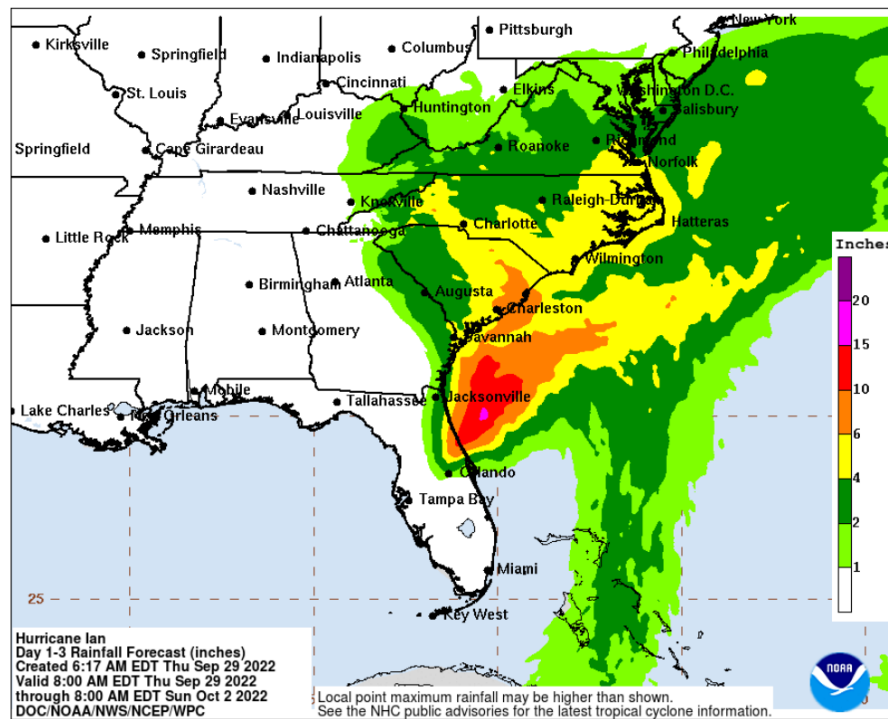
## 2) Rainfall

Ian is expected to produce the following total rainfall:

- East Central to Northeast Florida: Additional rainfall of 2 to 4 inches, with storm totals around 20 inches in spots.
- Coastal Georgia: 2 to 5 inches with locally higher amounts.
- Lowcountry of South Carolina: 4 to 8 inches, with local maxima of 12 inches.
- Upstate and central South Carolina, North Carolina, and southern Virginia: 3 to 6 inches with local maxima of 8 inches across western North Carolina.

Major-to-record river flooding will continue across central Florida through next week. Considerable flash, urban, and river flooding is expected across coastal portions of northeast Florida, southeastern Georgia, and eastern South Carolina through Friday. Locally considerable flash, urban, and small stream flooding is possible this weekend across portions of the southern Appalachians, where landslides will be possible as well. Limited flooding is possible across portions of the southern Mid-Atlantic.

U.S. Rainfall QPF (from WPC)

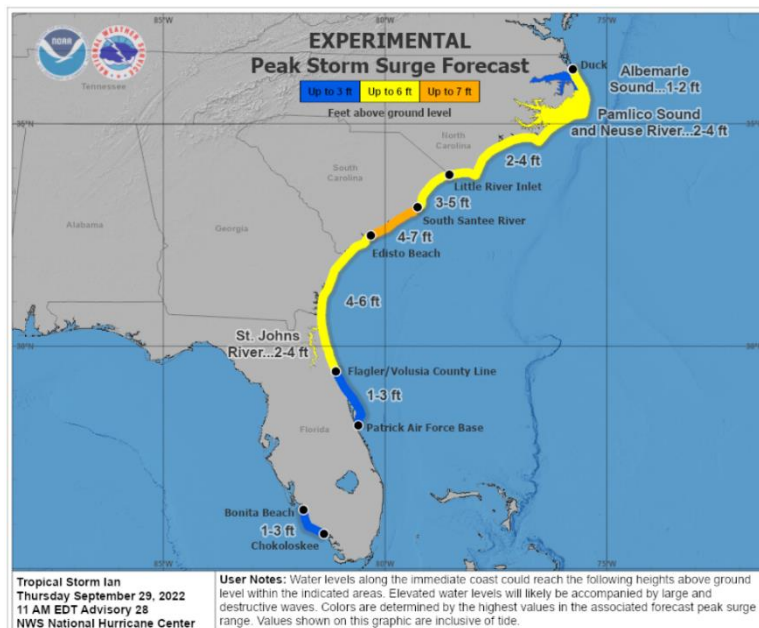


Day 1-5 Rainfall Forecast - Image Courtesy of NOAA

### 3) Storm Surge

The water could reach the following heights above ground somewhere in the indicated areas if the peak surge occurs at the time of high tide:

- Edisto Beach to South Santee River...4-7 ft
- Flagler/Volusia County Line to Edisto Beach...4-6 ft
- South Santee River to Little River Inlet...3-5 ft
- St. Johns River...2-4 ft
- East of Little River Inlet to Duck, including Pamlico and Neuse Rivers...2-4 ft
- Patrick Air Force Base to Flagler/Volusia County Line...1-3 ft
- Bonita Beach to Chokoloskee including Charlotte Harbor... 1-3 ft
- Albemarle Sound...1-2 ft



Peak Storm Surge Forecast – Image Courtesy of NOAA

### 4) Tornadoes

A tornado or two will be possible Friday across the coastal Carolinas.

### Intensity Guidance

Ian should move over the Gulf Stream tonight and tomorrow for a longer period of time than previously anticipated, which should maintain Ian's central convection. Additionally, an increased pressure gradient on the northwestern side from a

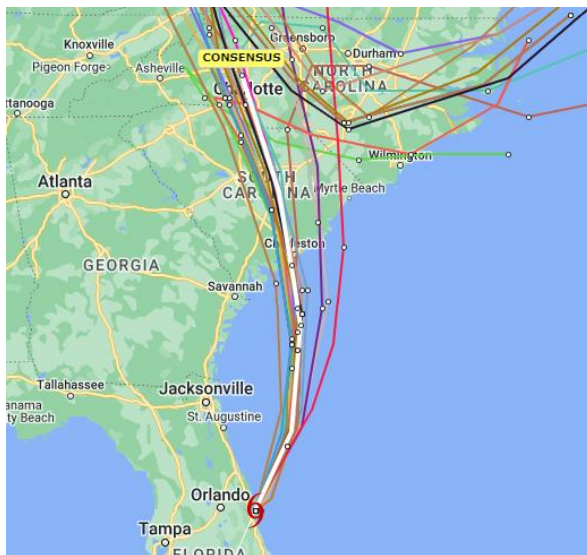


stationary front near the southeastern US, should provide a boost to the wind speeds on that side of the storm. We now expect Ian to become a hurricane again by this evening. As the system approaches South Carolina, Ian should maintain this intensity, and Hurricane Warnings have been issued for the entire coast of South Carolina. The intensity guidance models are in good agreement with this scenario.

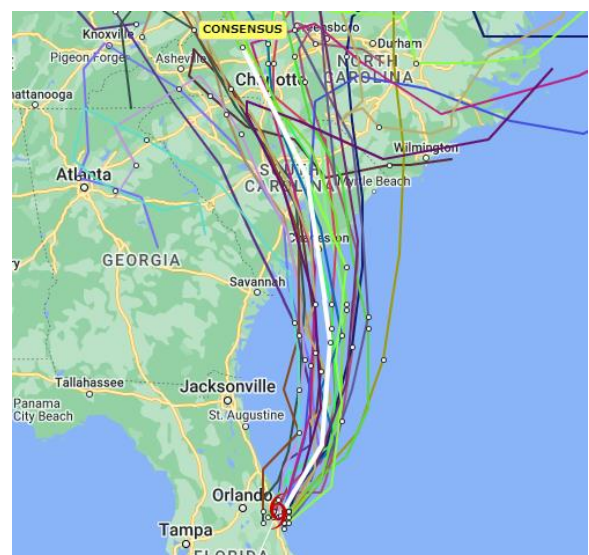
### Model Track Forecasts

Ian has moved back over water faster than expected, while satellite images show the system is becoming a hybrid cyclone. A mid-level shortwave trough moving southward across the southern United States should turn Ian northward overnight and north-northwestward on Saturday.

Guidance between the early model tracks (models available almost immediately and can be used by the forecaster in the current cycle) and the late model tracks (models that are more complex and generally take several hours to run) are in agreement in the near term. All model tracks with the exception of one or two are showing a South Carolina landfall. The most likely location at this time is around the Charleston, SC area. After landfall, the track guidance is very uncertain.



Early Model Tracks – Image Courtesy of Tropical Atlantic



Late Model Tracks – Image Courtesy of Tropical Atlantic

Data is reported by Tropical Atlantic, Tropical Tidbits, Weathernerds, The Weather Prediction Center, and the National Hurricane Center, a division of the National Oceanic and Atmospheric Administration

## Key Contacts



**Simon Hedley**  
*CEO, Acrisure Re*  
Location: New York  
+1 212 792 8905  
SHedley@AcrisureRe.com



**Michael Cross**  
*President, Acrisure Re NA*  
Location: Burlington  
+1 336 603 1469  
MCross@AcrisureRe.com



**Warren Berkstresser**  
*EVP & Head of Seattle Office*  
Location: Seattle  
+1 206 673 0159  
WBerkstresser@AcrisureRe.com



**Craig Darling**  
*EVP & Head of Florida Office*  
Location: Florida  
+1 321 372 8762  
CDarling@AcrisureRe.com



**Michael Fitzgerald**  
*SVP, Head of Burlington Office*  
Location: Burlington  
+1 336 512 9080  
MFitzgerald@AcrisureRe.com



**Clark Hontz**  
*President of Bermuda Office*  
Location: Bermuda  
+1 441 296 2772  
CHontz@AcrisureRe.com



**Ming Li**  
*Managing Director & Global Head of Catastrophe Modeling*  
Location: New York  
+1 917 435 0477  
MLi@AcrisureRe.com



**Marc Piccione**  
*Partner*  
Location: New York  
+1 646 665 7561  
MPiccione@AcrisureRe.com



**David Sowrey**  
*Partner*  
Location: London  
+44 (0) 20 7680 8394  
DSowrey@AcrisureRe.com



**Paul Sperrazza**  
*SVP, Head of Minneapolis Office*  
Location: Minneapolis  
PSperrazza@AcrisureRe.com



**Rick Thomas**  
*Managing Director*  
Location: Zurich  
+41 78 669 17 40  
RThomas@AcrisureRe.com



**Jeff Turner**  
*Partner, MD of Toronto*  
Location: Toronto  
+1 416 847 5440  
JTurner@AcrisureRe.com



## Confidentiality Notice

This document, including any attachments, is solely for the use of the intended addressee and may contain privileged and/or confidential information. If you are not the intended recipient, you must not make any use of this documents or its attachments. Please immediately notify the sender and destroy all copies of this document and its attachments using industry accepted data destruction methods.

If you retain this document and its attachments, by doing so, you fully consent:

1. to use this information only for the purposes for which it was provided, ensuring that such information remains privileged, is kept confidential and protected from unauthorized use, disclosure, alteration, destruction or distribution;
2. to abide by all laws and regulations applicable to our Client and the Acrisure Group of companies which govern the treatment of data including that of natural persons; and
3. to only distribute such information to parties when necessary for the fulfilment of the business purpose and who have consented to these or materially alike provisions contained in this article;

You further consent to follow the reasonable instructions of our Client and/or the Acrisure Group of companies, or their agents, made time to time to ensure that such data, whether held by you, or the parties to which you have distributed it to, is maintained in accordance with this article, including but not limited to consenting to data security audits.

In order for our Clients or Acrisure to meet their obligations you further consent to immediately notifying Acrisure in writing in the event of a breach of this article or when you have been contacted by a natural person concerning their personal data.

Irreparable harm may arise to the parties supplying this information, including data subjects, for which financial remedies may be inadequate and therefore the forenamed parties retain the right to seek injunctive relief (or similar process), including under laws to which the aforementioned parties are subject to, when necessary to ensure that the information provided is afforded the expected duty of care or remedy in the event of unauthorized use of data.

## Disclaimer

Acrisure Re and its affiliates ("we", "us" or "our") provide the information contained within this document on an as is basis solely for the use of the intended recipient and for informational purposes only. We make no representation, guarantee, or warranty, whether express or implied, including any as to the accuracy, completeness, timeliness, satisfactory quality or fitness for any particular purpose or use of any information contained herein.

We may have relied on data provided by an insurer, reinsurer, managing general agent, public data and other sources when preparing this information. Such information, and our related calculations, projections, forecasts and estimates, are derived from or based on sources believed by us to be reliable, but we do not guarantee the correctness or accuracy of such information, calculations, projections, forecasts or estimates. All forward-looking statements in this document are subject to various risks and uncertainties that could cause results to differ materially from expectations. Users should not place reliance on such forward-looking statements or any other information contained herein.

We shall not be liable, under any circumstances, to any user or other person for any direct, special, indirect, incidental, consequential, punitive or damages of any other kind, or for lost profits or lost opportunities associated with this information including but not limited to the underlying data, the actuarial methods used in the analysis of the data and the resulting information. We do not accept any liability associated with the use of this information and no duty of liability is owed to any party unless agreed otherwise in writing by us.

This document and the information contained herein constitute our property, which may include trade secrets, and such document and information shall not be distributed by the recipient to any other party without our prior written approval. Our rights in respect of this are reserved, including seeking damages for unauthorized use of the document and/or the information contained therein and/or seeking injunctive or other similar relief.

Acceptance of this document is deemed agreement to the terms set forth in this Important Notice.